



# VISION™ *by* BASIC

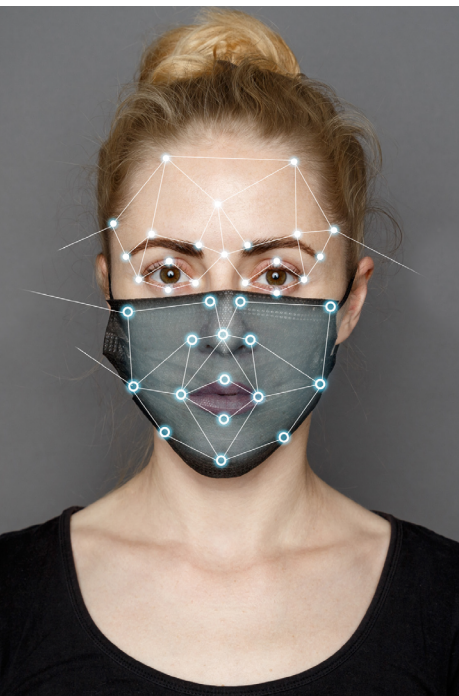
## Touchless Authentication

Vision™ is a touchless biometric clock with advanced facial recognition. This employee timeclock confirms identity even if the user is wearing a mask. Because verification takes less than a second, it allows you to collect exact clock-in/out time data in real time from every site.

Minimal contact terminal helps prevent the spread of germs on high-touch shared surfaces.

Unlike fingerprint clocks, facial recognition is not affected by gloves or dusty, greasy, or worn fingerprints. This makes it ideal for all work environments including office settings, healthcare, retail, hospitality, educational, manufacturing, and industrial.

In addition, Vision™ is your best protection against buddy punching, which is a costly and common problem with PIN and prox card systems.



## Product Specifications

- Dimensions: 12.3 x 5.6 x 3 (W x H x D)
- Facial authentication for up to 6000 users
- Infrared light facial biometric that can identify user in under 1 second
- Adapts to low light environments
- AC adaptor and power over Ethernet included
- Battery backup sold separately

## Features

- Facial reader identifies employees quickly and accurately to prevent lost productivity due to slow clock in queues
- Sanitary touchless verification and minimal contact clock in/out helps maintain a healthy workplace
- Creates accurate timecards which are easily processed and securely stored
- Not vulnerable to lost key cards or passwords which saves time for managers and the HR team
- Prevents all forms of time theft including buddy punching, the sharing of clock in devices, or hours padding
- Controls access for enhanced security, schedule enforcement, and COVID-related occupancy thresholds



For more information about any of our services or to speak with a sales consultant call 800.444.1922 x 3 or visit [basiconline.com](http://basiconline.com).

BASIC COBRA BASIC ACA Elevate BASIC FMLA BASIC Payroll